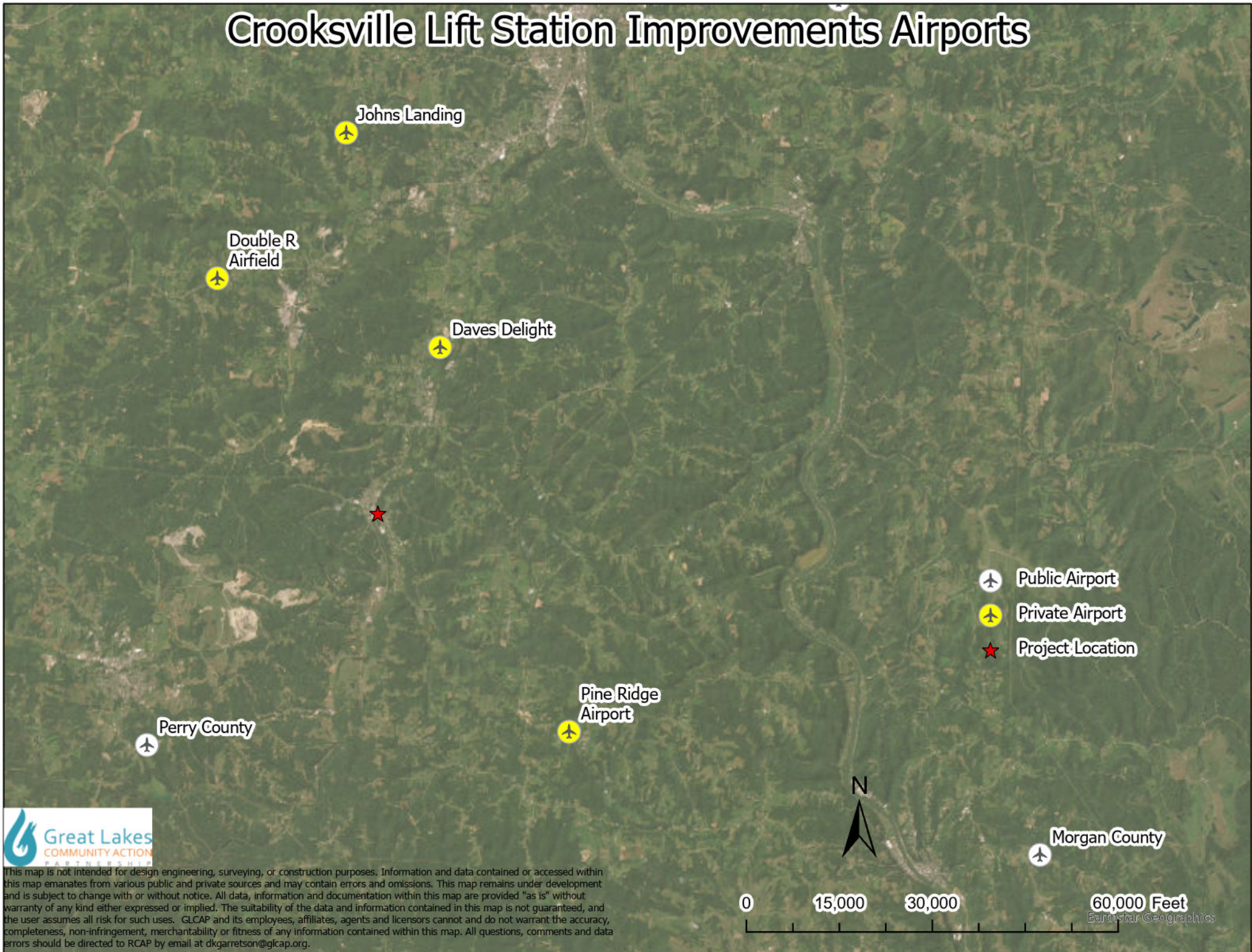


Crooksville Lift Station Improvements Airports



This map is not intended for design engineering, surveying, or construction purposes. Information and data contained or accessed within this map emanates from various public and private sources and may contain errors and omissions. This map remains under development and is subject to change with or without notice. All data, information and documentation within this map are provided "as is" without warranty of any kind either expressed or implied. The suitability of the data and information contained in this map is not guaranteed, and the user assumes all risk for such uses. GLCAP and its employees, affiliates, agents and licensors cannot and do not warrant the accuracy, completeness, non-infringement, merchantability or fitness of any information contained within this map. All questions, comments and data errors should be directed to RCAP by email at dkgarretson@glcap.org.



Crooksville Lift Station Improvements Airports

Double K
Airfield



Daves Delight



Pine Ridge
Airport



Perry County



-  Public Airport
-  Private Airport
-  Project Location



0 10,000 20,000 40,000 Feet

Maxar



This map is not intended for design engineering, surveying, or construction purposes. Information and data contained or accessed within this map emanates from various public and private sources and may contain errors and omissions. This map remains under development and is subject to change with or without notice. All data, information and documentation within this map are provided "as is" without warranty of any kind either expressed or implied. The suitability of the data and information contained in this map is not guaranteed, and the user assumes all risk for such uses. GLCAP and its employees, affiliates, agents and licensors cannot and do not warrant the accuracy, completeness, non-infringement, merchantability or fitness of any information contained within this map. All questions, comments and data errors should be directed to RCAP by email at dkgarretson@glcap.org.