

RESOLUTION NO. 2017-44

A RESOLUTION AMENDING RESOLUTION NO. 2016-81 AND APPROVING THE UTILIZATION BY PERRY COUNTY, RATHER THAN THE OHIO DEPARTMENT OF TRANSPORTATION, OF CERTAIN VILLAGE PROPERTY FOR BRIDGE CONSTRUCTION, WITHOUT PAYING OVER COMPENSATION THEREFORE, AND DECLARING AN EMERGENCY

WHEREAS, on December 19, 2016, the Village of Crooksville passed Resolution No. 2016-81, granting the Ohio Department of Transportation the right to utilize lands in which said Village has ownership rights and/or utility right of way rights and/or other easement/right of way rights as necessary to complete the planned improvements for the Village of Crooksville's Main Street Bridge, as depicted on the Exhibit attached to said Resolution;

WHEREAS, said Resolution No. 2016-81, contained a scrivener's error throughout the Resolution, in that the Village of Crooksville intended to grant to Perry County, rather than to the Ohio Department of Transportation; and

WHEREAS, the Village of Crooksville desires to amend said Resolution No. 2016-81, in order to correct said scrivener's error.

NOW THEREFORE, be it **RESOLVED** by the Council of the Village of Crooksville, Ohio:

Section 1: Resolution No. 2016-81, passed December 19, 2016, is hereby **AMENDED** such that the Village of Crooksville hereby grants to **Perry County** the right to utilize lands in which said Village has ownership rights and/or utility right of way rights and/or other easement/right of way rights as necessary to complete the planned improvements for the Village of Crooksville's Main Street Bridge, as depicted on the attached Exhibit.

Section 2: Resolution No. 2016-81, passed December 19, 2016, is further **AMENDED** such that it is found and determined that the planned improvements to the Village of Crooksville's Main Street Bridge, by **Perry County**, in and of themselves are sufficient and just compensation for any Village land that may necessarily be utilized for said improvements by the Ohio Department of Transportation, and therefore, no monetary compensation shall be demanded or received by the Village of Crooksville in exchange for **Perry County's** utilization of Village lands as depicted on the attached Exhibit.

Section 3: This Resolution shall pass as an emergency and have immediate effect, in the interests of the public welfare, in order that no delay shall be caused to the improvements planned for the Village's Main Street Bridge, upon which work is scheduled to commence.

1st Reading: Waived on 2/3 Vote ;

2nd Reading: Waived on 2/3 Vote ;

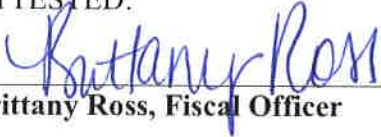
3rd Reading: June 5, 2017 ;

Passed: June 5, 2017 .



Mayor Fred Redfern

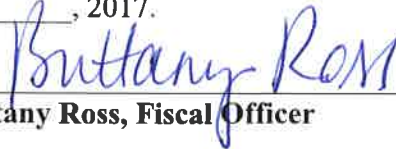
ATTESTED:



Brittany Ross, Fiscal Officer

Posting Certification

This resolution was posted at the five prescribed locations within the Village of Crooksville, Ohio, on the 6th day of June, 2017.



Brittany Ross, Fiscal Officer

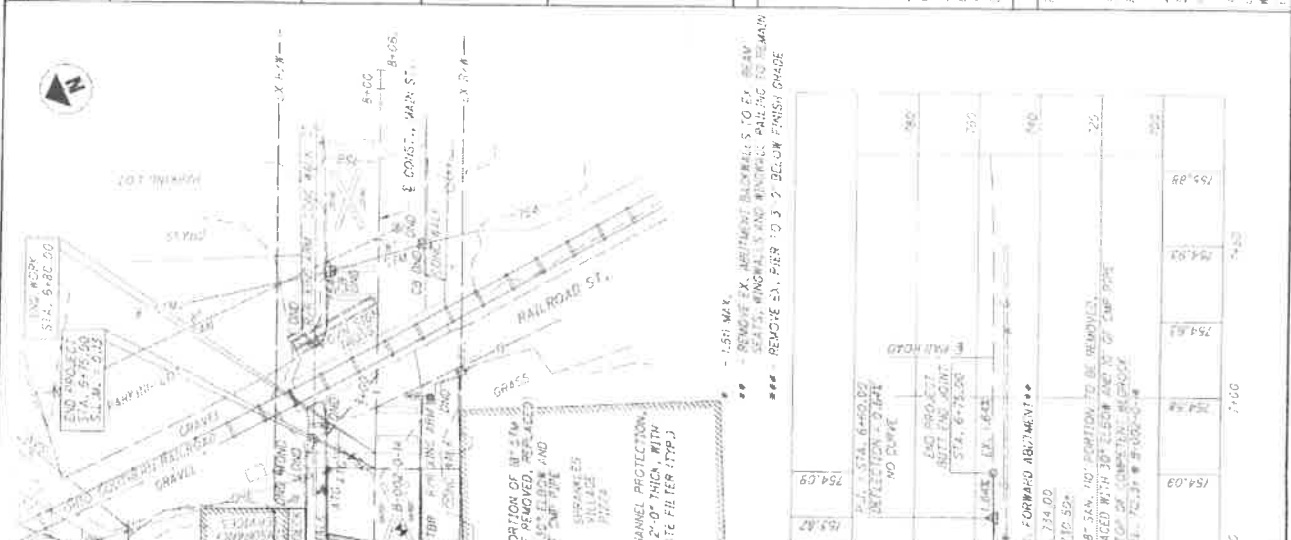
BENCHMARK DATA	
BM #1 (IRON PIN) STA. 5+31.85, 48.66' I. P., 76.10'	SOIL BORING
BM #2 (IRON PIN) STA. 5+32.12, 47.85' I. P., 75.95'	NO - DO NOT DISTURB
BM #3 (IRON PIN) STA. 5+32.76, 44.02' I. P., 75.76'	D.S. - EXPOSED SHAFT
	L.P. - FOOT OF PAVERMENT
	SLEEPER SLAB - TO BE REMOVED
	EX. WALK REMOVED AND ADJUST TO GRADE
	ROCK CHANNEL PROTECTION
	BY OWNERS

TRAFFIC DATA	
CURRENT YEAR A.D.T. (2018)	4,200
DESIGN YEAR A.D.T. (2035)	2,600
CURRENT AVERAGE DAILY TRUCK TRAFFIC	3%
DIRECTIONAL DISTRIBUTION	60%

HYDRAULIC DATA	
SPRAINAGE AREA (69.2 SQ. MI.)	1065 SQ. FT.
EXISTING WATERWAY AREA (920 SQ. FT.)	920 SQ. FT.
PROPOSED WATERWAY AREA (920 SQ. FT.)	920 SQ. FT.
DESIGN C.F.S.	6300 C.F.S.
V.S. = 5.03 FT./S.	Top = 6.42 FT./S.
HWS = 156.02	HWS = 152.71
HWS CLEARS EOP BY 2.30 FT.	

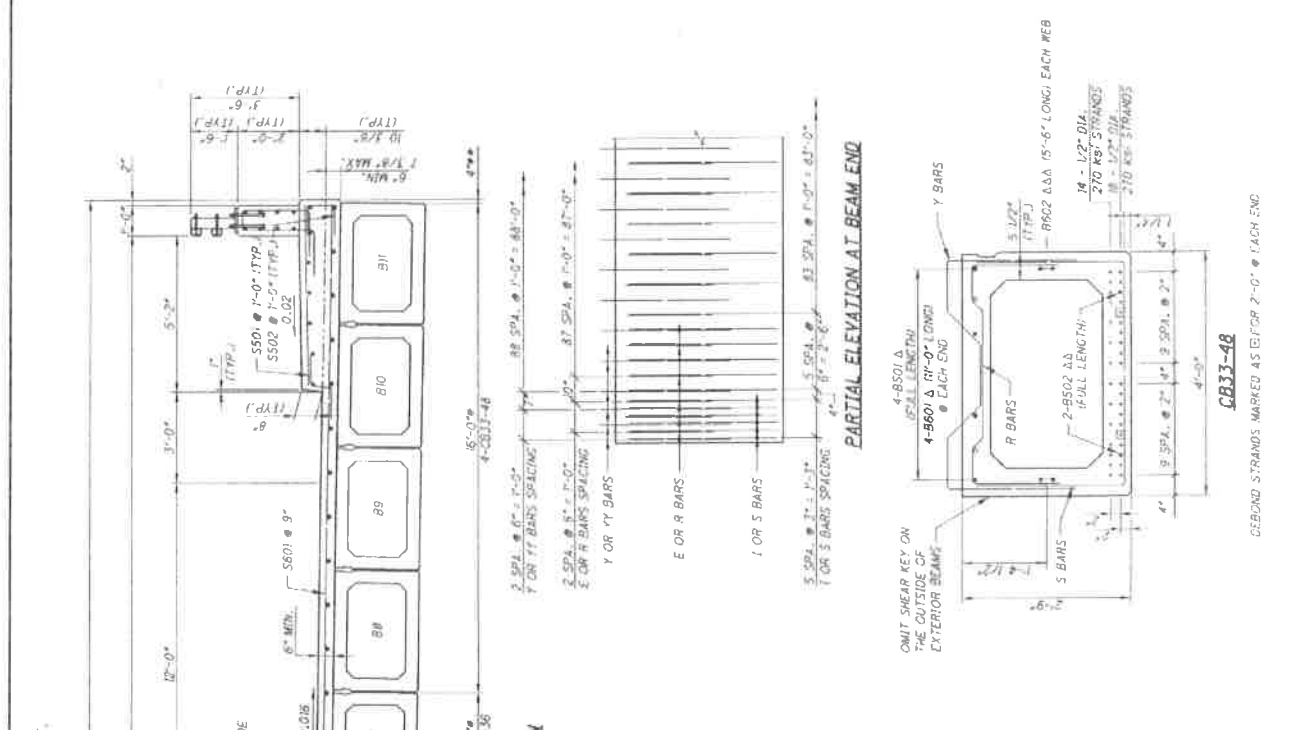
EXISTING STRUCTURE	
TYPE: ROLLED STEEL BEAMS WITH REINFORCED CONCRETE DECK AND SUBSTRUCTURE ON SPREAD FOOTINGS	
SPAN: 50'-0", 50'-0" x 1/2" BLANKING	
ROADWAY: 29'-6" x 1/2" CURB WITH 5'-3" SIDEWALK	
ALIGNMENT: TANGENT	
DECK: 9" x 1/2" FORWARD	
DESIGN: LADING UNKNOWN	
APPROACH SLABS: 35'-0" LONG	
APPROACH SURFACE: ASPHALT CONCRETE, 3" INCH	
STRUCTURE FILE NUMBER: B43366	
DATE BUILT: 1993	
MAJOR REPAIRS: 7/09	
DISPOS: ON TO BE REPLACED	

PROPOSED STRUCTURE	
TYPE: SINGLE-SPAN COMPOSITE PRESSED CONCRETE BOX BEAM ON SEMI-FRONTAL ABUTMENTS SUPPORTED ON SPREAD FOOTINGS	
SPAN: 90'-0" x 1/2" CURB WITH 5'-3" SIDEWALK	
ROADWAY: 29'-6" x 1/2" CURB WITH 5'-3" SIDEWALK	
ALIGNMENT: TANGENT	
DECK: 10" x 1/2" FORWARD	
APPROACH: 14'-0"	
WITH 60 PSI FUTURE WEARING SURFACE	
APPROACH SLAB: 20'-0" LONG (AS-115 & AS-116)	
WEARING SURFACE: 1" MONOLITHIC CONCRETE	
1" THICK (AS-115 & AS-116)	



ROCK CHANNEL PROTECTION LOCATION TABLE

STATION	PROTECTION TYPE	LENGTH
5+14.20	48' DIA. BEQUEEN SOURCE (TYP.)	48'
5+24.39	42' DIA. DRILLED SHAFT (TYP.)	42'
5+31.83	48' DIA. BEQUEEN SOURCE (TYP.)	48'
5+32.32	42' DIA. DRILLED SHAFT (TYP.)	42'

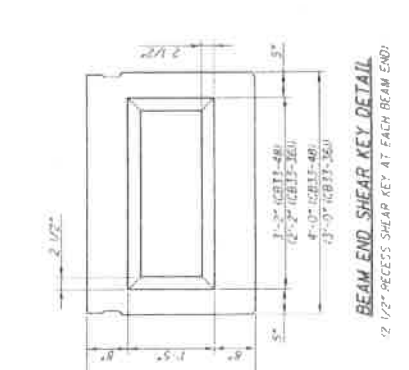
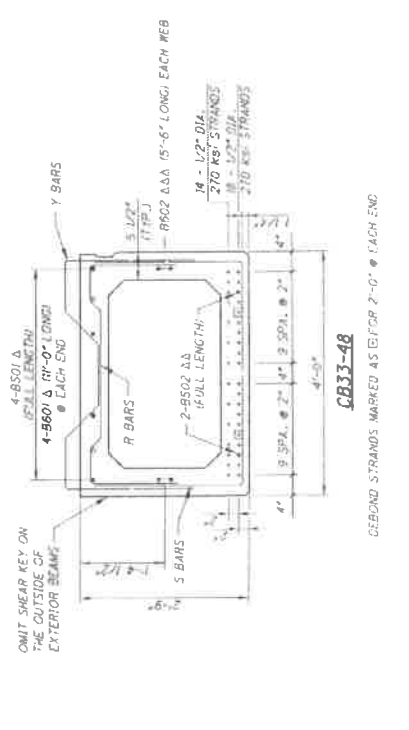


TYPICAL TRANSVERSE SECTION

• - PLUS FIT-UPS
 •• - MINUS FIT-UPS

7. UTILITY MANGERS SHOWN ARE SCHEMATIC, AND TO BE DESIGNED, FURNISHED AND INSTALLED BY UTILITIES.
 8. VERTICAL PRECAST BARS PROJECTING FROM THE BEAMS (Y AND Y1) SHALL BE EPOXY COATED AND BE INCLUDED WITH ITEM 515, PRESTRESSED CONCRETE COMPOSITE BOX BEAM BRIDGE MEMBER, FOR PAYMENT.
 9. UTILITY MANGERS SHOWN ARE SCHEMATIC, AND TO BE DESIGNED, FURNISHED AND INSTALLED BY UTILITIES.
 10. VERTICAL PRECAST BARS PROJECTING FROM THE BEAMS (Y AND Y1) SHALL BE EPOXY COATED AND BE INCLUDED WITH ITEM 515, PRESTRESSED CONCRETE COMPOSITE BOX BEAM BRIDGE MEMBER, FOR PAYMENT.

- NOTES:**
 1. FOR PRESTRESSED CONCRETE BOX BEAM DETAILS, SEE STD. DWG. PSBD-2-07.
 2. FOR SIDEWALK REINFORCING PLAN, SEE SHEET [9729], FOR RAILING DETAILS, SEE SHEET [9723] & [9724].
 3. FOR BEAM LAUNCH, UTILITY SUPPORT AND ANCHOR DEVICE SPACING, SEE SHEET [9723].
 4. THE FACTORED UTILITY DEAD LOAD PER UTILITY SUPPORT IS 1.0 KIP. FOR UTILITY SUPPORT DETAILS, SEE SHEET [9723].
 5. LONGITUDINAL BARS SHALL BE PLACED PARALLEL TO CONSTRUCTION, AND SPACING MEASURED PERPENDICULAR TO CONSTRUCTION.
 6. TRANSVERSE BARS SHALL BE PLACED PARALLEL TO BEARINGS, AND SPACING MEASURED ALONG TO CONSTRUCTION.



CB33-48

DEBOND STRANDS MARKED AS [] FOR 2'-0" @ EACH END

BEAM END SHEAR KEY DETAIL

1/2" RECESS SHEAR KEY AT EACH END

CB33-36

DEBOND STRANDS MARKED AS [] FOR 2'-0" @ EACH END
 DEBOND STRANDS MARKED AS [] FOR 4'-0" @ EACH END

DATE	10/16	DESIGNED	SS/YSL
DRAWN	JL	CHECKED	JH
PROJECT NO.	643365	SCALE	AS SHOWN

COLUMBUS ENGINEERING CONSULTANTS, INC.
 2515 W. 10TH AVENUE
 DENVER, CO 80202
 TEL: 303-733-1000